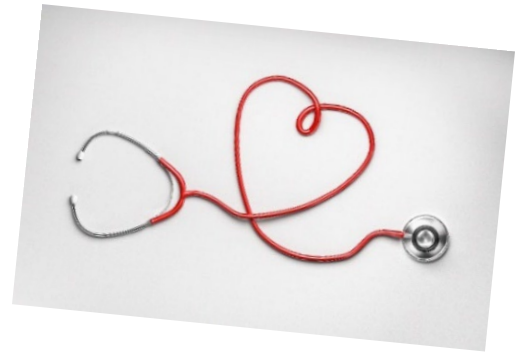
 **West Ohio Conference**  
**2023 Healthcare Open Enrollment**



**What You Need to Know:**

- ✓ Same healthcare plan, no plan or insurance carrier changes!
- ✓ If you are not making ANY changes, you do not need to complete a new enrollment form.
- ✓ If you are waiving coverage, joining for the first time, adding or dropping a family member/s from your plan, you will need to complete the Anthem Enrollment form: [Anthem health enrollment form 2023](#) and email to: [Dgyimah@wocumc.org](mailto:Dgyimah@wocumc.org) or mail to the Conference Benefits Office by: **December 19, 2022**.
- ✓ To enroll or make changes to your Health Savings Account Plan (HSA), complete return this form: [2023 Health Savings Account \(HSA\) Forms](#) and return to the same information above.
- ✓ This is a good time of year to review/update changes to your Life Insurance information.

**2023 Active Healthcare Rates:**

Healthcare rates will increase in 2023 by 8% due to inflation, claims, and industry trends. The employer-share is 87% and employee-share is 13%. The rates include Medical, Dental, Life, and Vision. For the 2023 Healthcare Rates: [2023 Active Healthcare Rates and Quick Reference \(002\)](#)

**Scheduled Open Enrollment Meetings:**

You and your family members are welcome to attend the in-person or virtual meetings listed below. **If you plan to participate in person, please RSVP by 11/21 at: [gwelch@wocumc.org](mailto:gwelch@wocumc.org)** . Also, check the Conference website after 11/28 for a video recording of the Open Enrollment meetings.

| <b>November 22</b> | <b>In-Person, Conference, Albright Room</b>   |                 |
|--------------------|---|-----------------|
| Time:              | <b>10 – 11 AM</b>   | <b>2 – 3 PM</b> |
| <b>November 28</b> | <b>Virtual via Zoom</b>   |                 |
| <b>10 – 11 AM</b>  | <a href="https://us06web.zoom.us/j/84732733057?pwd=OU1NbGFIV0hFYzFNT0hNMDZpdUNNQTO9">https://us06web.zoom.us/j/84732733057?pwd=OU1NbGFIV0hFYzFNT0hNMDZpdUNNQTO9</a> |                 |
| <b>2 – 3 PM</b>    | <a href="https://us06web.zoom.us/j/81365633446?pwd=b1ZzWWNPRHc2N3RXcc9NYVFMVElpdz09">https://us06web.zoom.us/j/81365633446?pwd=b1ZzWWNPRHc2N3RXcc9NYVFMVElpdz09</a> |                 |

The OhioHealth Employee Assistance Program

